

Cleveland Chapter of The American Society of Plumbing Engineers
September 2017

CHAPTER OFFICERS

President

JOHN VARGA, P.E.
Scheerer Buckley Mayfield, Inc.
Email: jvarga@sbmce.com
(330) 896-4664
(330) 896-9180 (fax)

V.P. Technical

DIETER HAUSMANN, P.E. CPD, LEED AP
TES Engineering
Email: kdhausmann@tesengineering.com
(440) 871-2410

V.P. Legislative

KEVIN CONYNGHAM
Libb Company Inc.
Email: kevinc@libbco.com
(800) 362-9719
(800) 451-0221 (fax)

V.P. Membership

GREG TROMBOLD
Trombold Equipment Company
Email: gtrombold@hotmail.com
(216) 663-8700
(216) 663-8702 (fax)

Treasurer

KEVIN NOBLE, P.E., LEED AP
Scheerer Buckley Mayfield, Inc.
Email: knoble@sbmce.com
(330) 896-4664 ext. 114
(330) 896-9180 (fax)

Administrative Secretary

DAN EVANS, P.E., CPD, GPD, LEED AP
HEI Engineering Group, Inc.
Email: evans@hei-ohio.com
(330) 262-0042
(330) 262-0392 (fax)

Corresponding Secretary

CRAIG McDOWELL
Omar McDowell Company
Email: craig@omarmcdowell.com
(440) 808-2280
(440) 808-2266 (fax)

Affiliate Liaison

KATHY KIRSCHNICK
Spirax Sarco
Email: kkirschnick123@gmail.com
(216) 533-7747
(216) 904-6656 (cell)

Newsletter Editor

MICHAEL DRAB
Thorson Baker & Associates, Inc.
Email: mdrab@thorsonbaker.com
(330) 659-6688
(330) 659-6675 (fax)

From the President:



Summer is officially over with a new season beginning with the annual Clambake Social at the Cleveland Yachting Club will be held on Wednesday, September 13, 2017. Everyone planning to attend should also start warming up for the Corn Hole Tournament. Hope to see you then!

The 2017 ASPE Technical Symposium and Product Show will be held October 19 – 22, 2017 in Montreal, Quebec, Canada. Passport is required to cross the border! Please visit aspe.org for more information.

Let us know if there are any specific topics or field trips you would like to see our chapter sponsor. We are always looking for new ideas. Remember, without membership and participation, there is no local chapter.

Regards,
John A. Varga, P.E.
President, Cleveland Chapter of ASPE




2017 Tech Symposium
October 19-22

Hotel Bonaventure Montréal | Montréal, Québec

Start Planning Ahead!!

Click here for information on:

- Obtaining a U.S. Passport
- Renewing a U.S. Passport
- Modifying a current U.S. Passport

**PLANNING
GUIDE
CLICK HERE!**

ASPE CLAMBAKE SOCIAL

Wednesday September 13, 2017

Cleveland Yachting Club - Rocky River, OH
Center Isle



The first ASPE meeting of the year will take place at this annual event. This meeting is member "appreciation and participation" and is open to all Family members and Friends.

Our Chapters are one of the most successful chapters in the country because of its members. The clam bake is a perfect time to "participate" and meet other members.

THE CLAM BAKE WILL INCLUDE:

- CLAM CHOWDER
- ONE DOZEN CLAMS*
- 1/2 CHICKEN **OR** STRIP STEAK
- CORN ON THE COB
- SWEET POTATOES OR REDSKINS
- DINNER ROLLS WITH BUTTER
- DESSERT
- COFFEE, DECAF COFFEE & TEA

Cost per Bake - \$45.00 for Steak

\$40.00 for chicken

Cocktails served at 5:30 PM • Dinner at 6:30 PM

* Additional dozen clams available for \$15.00



The tradition still remains...
Whoever shows up in a clam
suit will receive a free
dozen clams!

MEMBERS NAME _____

NUMBER OF STEAK BAKES _____ X \$45.00 = \$ _____

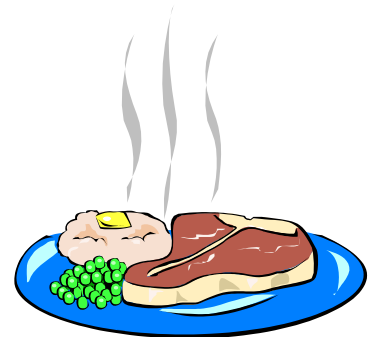
NUMBER OF CHICKEN BAKES _____ X \$40.00 = \$ _____

ADDITIONAL DOZEN _____ X \$15.00 = \$ _____

TOTAL ENCLOSED = \$ _____

Please make checks payable to: ASPE Cleveland Chapter
Mail to: Craig McDowell
Omar McDowell Company
25109 Detroit Rd., #320
Westlake, Ohio 44145

Send your RSVP to Craig at: Fax: (440) 808-2266
Phone: (440) 808-2280
Email: craig@omarmcdowell.com

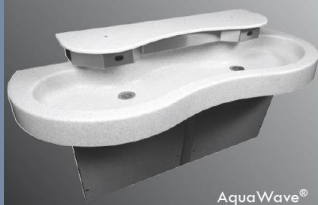


****RESERVATION DEADLINE: SEPTEMBER 11, 2017****



BUILT TO LAST, IN AMERICA

Commercial



AquaWave®
Two-station Lavatory

Healthcare



Infection
Control Sink

Recreational



Outdoor Drinking
Fountain & Bottle Filler

Security



Combination
Sink and Toilet



WILLOUGHBY

COUNT ON US.

800.428.4065 | www.willoughby-ind.com

Represented by BWA South

© 2015 Willoughby Industries Inc.



Industrial, Mechanical & Plumbing Professionals

Where Service + Knowledge = Solutions! www.mwspec.com

 <ul style="list-style-type: none"> Access Doors 	 <ul style="list-style-type: none"> Hydrants Fountains Water Coolers 	 <ul style="list-style-type: none"> Pipe Markers Valve Tags Signs
 <ul style="list-style-type: none"> High Performance & General Purpose Butterfly Valves; Electric & Pneumatic Actuators & Controls. 	 <ul style="list-style-type: none"> Laboratory Stations Shower Systems Water Coolers Patient Care Fixtures 	
 <ul style="list-style-type: none"> Instantaneous Water Heaters Mini Tank Heaters 	 <ul style="list-style-type: none"> Master Mixing Valves Safety Mixing Valves Tempering Valves TIP Valves 	
 <ul style="list-style-type: none"> Kills Legionella Dead. 	 <ul style="list-style-type: none"> Flexible Metal Hose Expansion Joints 	
 <ul style="list-style-type: none"> Emergency Eye Wash & Showers Skid Mounted Tepid Water Generators 	 <p>ENCLOSURES DESIGNED FOR THE WORLD'S WATER SYSTEMS</p>	
 <ul style="list-style-type: none"> Sustainable Restroom Solutions 	 <ul style="list-style-type: none"> Drainage Products Trench Drains 	
 <ul style="list-style-type: none"> Commercial Faucets Lead-Free Since 2010! 	 <ul style="list-style-type: none"> Steam Specialty Products: Traps, Regulators & Condensate Pumps 	
 <ul style="list-style-type: none"> Commercial Boilers 	 <ul style="list-style-type: none"> Gas Safety Systems Utility Control Units Emergency Shut Down Products 	

Northern OH Office:

29315 Clayton Ave.
Wickliffe, OH 44092 440-944-7500
clesales@mwspec.com

= MW SPEC STOCK

N Ohio Card #17



**LEAD-FREE.
WORRY-FREE.
HASSLE-FREE.
4 YEARS EARLY.**



www.tsbrass.com
800.476.4103

With new national lead-free legislation taking effect in 2014, there's been a lot of talk about making the switch. Here's the truth: T&S was the first fixture, faucet and fitting manufacturer to convert its entire line to lead-free alloys back in 2010.

So when you purchase a T&S faucet today, you're already lead-free compliant. No worries. No hassle.

Visit tsbrass.com/literature to download a free brochure about our lead-free products, or contact your local T&S rep for more information.



T&S plumbing products represented in Cleveland by: Midwest Spec - 800-298-0401

NaviLink™

Wi-Fi remote access
anywhere in the world
to your Navien systems



New



GERBER

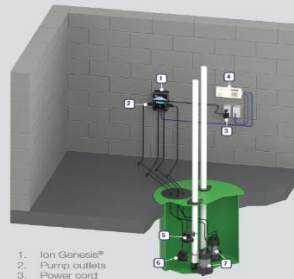


GET TEXT MESSAGE ALERTS ABOUT YOUR
SUMP PIT DIRECT TO ANY* PHONE
Introducing the Ion+ Connect - Now Available!



* Any GSM capable phone. Phone not included.

Typical Installation Diagram

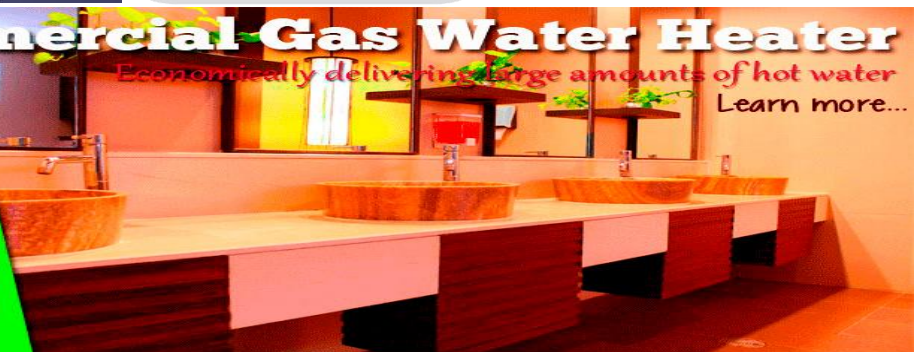


1. Ion Genesis®
2. Pump outlets
3. Power cord
4. Deter (optional)
5. High water sensor
6. Digital level sensor
7. Pumps (optional)



Commercial Gas Water Heater

Economically delivering large amounts of hot water
Learn more...



**CURNAYN
SALES INC.**

21706 Lunn Road, Strongsville, OH 44149
440-846-1280 www.curnaynsales.com

CONQUEST[®]

Condensing Water Heater

399 ■ 500 ■ 600 ■ 700 and 800 MBH Models
130 Gallon Tank

Represented By:
Omar Mc Dowell Co.
craig@omarmcdowell.com
(440) 808-2280



Featuring...

AquaPLEX[®]
ENGINEERED DUPLEX ALLOY

*No tank linings.
No anodes of any type.*

15-YEAR TANK AND
HEAT EXCHANGER
CORROSION WARRANTY

UP TO 97%
THERMAL EFFICIENCY
AT FULL RATE FROM
40°F TO 140°F

**SEAMLESS VFD
MODULATION
REDUCES CYCLING
AND IMPROVES
EFFICIENCY UP TO
99% DURING LOW
LOAD CONDITIONS**

**TANK AND HEAT
EXCHANGER MADE
ENTIRELY FROM
AquaPLEX[®]
DUPLEX STAINLESS
STEEL ALLOY**

**TOUCH-SCREEN
OPERATING CONTROL
WITH PLAIN-TEXT
DIAGNOSTICS**



NSF 5
NSF 372 lead-free

Intertek

Intertek

ASHRAE 90.1 - 2013 compliant
SCAQMD compliant



PVI[®]

Engineered Water Heating Solutions[®]



RELIABILITY

NATIONWIDE DISTRIBUTION NETWORK



Domestic Cast Iron Soil Pipe & Fittings

AB&I Foundry, founded in 1906, manufactures cast iron soil pipe and fittings for DWV plumbing systems. Based on RELIABILITY, our products are built to last with unsurpassed performance and durability. Best of all, they're made right here in the USA. See for yourself what a difference RELIABILITY can make. We invite you to learn more about our products by visiting ABIFoundry.com.

INTEGRITY and RELIABILITY—That's the AB&I way.



Learn more about
reliable products
and order our new
product catalog at
GotIron.us

ABIFoundry.com
800-GOT-IRON
(800-468-4766)
7825 San Leandro Street
Oakland, CA 94621





PURELY AMERICAN NO FOREIGN MATTER

American craftsmanship is alive and well at Charlotte Pipe and Foundry.

When you specify cast iron pipe and fittings from Charlotte Pipe and Foundry, you know exactly what you're getting. Charlotte cast iron products always meet ASTM and CISPI standards, and we don't stop there. To achieve uniform quality, we tightly control the chemical properties and temperature of our iron. We measure weight, thickness and laying length for dimensional accuracy. And, we date stamp every piece of cast iron pipe we make. Be proud to specify American.



CASPE CEU
American Society of
Plumbing Engineers PROVIDER

CHARLOTTE
PIPE AND FOUNDRY COMPANY

You can't beat the system.®



LAKE SIDE SUPPLY COMPANY

Serving Northern Ohio Since 1933



Lakeside Supply Company was founded in 1933 as a wholesale vendor of plumbing, heating, and industrial supplies to the northern Ohio marketplace. Over the years we have endeavored to provide services and products of the highest quality to the contractor, industrial, and commercial marketplace.

3000 West 117th Street
Cleveland, OH 44111-1667
Ph. 1-800-537-1234
Ph. 216-941-6800
Fax 216-941-8408
sales@lakesidesupply.com

SERVICES

Valve Automation
Electric & Pneumatic
Lakeside Managed Store Rooms

TOOLS

RIDGE TOOL
LENOX
CHAMPION
REED MFG
WHEELER-REX

SUMNER MFG

RAWL
JET-SWET
COB PIPE FREEZING
PASCO SPECIALTY TOOLS
CHERNE TEST BALLS
CHANNELLOCK
GOSS TORCHES
TURBOTORCH
VERMETE
Street Keys

Grinding Wheels & Brushes
Extension Cords & Gfi's

TOOL RENTALS

VICTAULIC-GROOVING MACHINE
ENFUSION TOOL
ENPURE TOOL
MCELROY FUSION PPR
RIDGE PRO-PRESS
EXACT PIPE CUTTING SYSTEM

Please visit lakesidesupply.com/products for full listing

Hours: Mon-Fri 7:30 am 5:00 pm | City Counter Open: Mon-Fri 7:30 am-4:30 pm | Closed for National Holidays

The Plumbing Engineers' Best Solution



www.htproducts.com

*High
Efficiency*



The Phoenix

316L Stainless Steel Tank

- 55 to 119 gallon units
- 100 to 199K Btuh units
- Venting: PVC / CPVC
- Up to 97% efficiency
- Load matching modulation
- 5:1 turndown ratio



Everlast

Lifetime Residential Warranty Electric Water Heater

- 316L stainless steel tank
- No anode rods needed
- Precision laser welding
- Lightweight
- Highly efficient 2" foam Insulation
- 10 Year Limited Commercial
Warranty & Lifetime Limited
Residential Warranty
(with online registration)



Stainless Steel



Phoenix LD

316 Stainless Steel Tank

- 50 to 80 gallon units
- 76K Btuh units
- No anode rods needed
- Venting: PVC / CPVC
- Up to 97% efficiency
- Load matching modulation
- Up to 154 gal. 1st hr. rating



(614) 876-2477
Hilliard, Ohio

HIGHLY-TRAINED PLUMBERS

The Cleveland Plumbing Industry actively promotes the most rigorous and effective standards for our local contractors in the plumbing and mechanical industry.



We can embrace these high standards because our plumbing technicians receive the finest and most comprehensive training in the world - allowing our Northeast Ohio contractors to deliver the finest products, service and installation in only the safest of environments.



Working For Our Members:

- Plumbing Codes
- Medical Gas Training
- Back Flow Prevention
- Safety Services
- Labor Relations
- Education & Training
- Promotion
- Government Affairs

 **CLEVELAND
PLUMBING**
I N D U S T R Y

TOLL FREE: 855-CPI-4ALL (855-274-4255)

CLEVELANDPLUMBINGINDUSTRY.COM

Trombold

Equipment Company

our website: www.trombold.com

*If you need to move water call
us we can help!*

*Storm and sewage—Weil
Domestic boosters - Delta P Carver
Fire—Patterson*

Phone 216-663-8700 Fax 216-663-8702

BWA SOUTH

Manufacturer's Representative
of quality plumbing products
since 1956

ZURN

ASI GROUP

PARTITIONS
ACCESSORIES
LOCKERS

WILKINS

a ZURN company

HTP



aquatherm



ZURN

GreenTurtle



CHARLOTTE

PIPE AND FOUNDRY COMPANY



SW

STERN-WILLIAMS

Jomar GROUP



ELKAY

IDEAL

Visit us at WWW.BWASOUTH.COM

2017 Webinar Series

Professional Liability Issues for Engineers

Presented by Peter D. Welin, a 2017 Tech Symposium Speaker

September 13, 2017 - 2 pm EDT

Earn Continuing Education Credits: This one-hour contact program awards 0.1 CEU or 1.0 PDH.*

This one-hour webinar provides an introduction into professional liability issues that confront all design engineers. The program is designed to give an overview of professional liability issues that arise, the types of insurance coverage available and some of the legal issues that confront all design engineers. The program will also delve into what constitutes an error or omission, the difference between statutes of limitation and statutes of repose and what to look for in contracts that will impact liability exposure.

The Presenter: Peter D. Welin



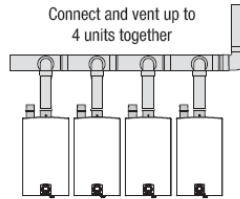
Peter Welin is a practicing construction lawyer in Columbus, Ohio. He represents owners, architects, engineers contractors and subcontractors in all aspects of construction litigation disputes. He is also an American Arbitration Association arbitrator and mediator and lectures regularly on risk mitigation and contract issues affecting all participants in the construction industry. Pete is a graduate engineer from Iowa State University (BSCE 1979) with a law degree from The Ohio State University (JD 1988).

Are you attending the [2017 Tech Symposium](#)? Good news for you! Peter is presenting this topic during the conference, so if you'd like an introduction to this topic followed by a more thorough discussion at the event, or if you'd like to sit in on a different session register for this webinar today!

Bradford White Infiniti Tankless Water Heaters

No matter the installation, Infiniti Tankless Water Heaters Provide Reliable Performance

With up to a 0.95 Energy Factor and built-in Scale Reduction Technology (SRT™), Bradford White Infiniti Tankless™ water heaters feature exclusive designs that improve performance, simplify service, and increase overall product life. Both the fully condensing high efficiency model and a non-condensing mid efficiency model feature an input of 199,000 BTU/Hr., a fully-modulating Ultra Low NOx burner, and easy-to-use digital controls.



Committed to American Manufacturing,
Wholesale Distribution, and Professional Installation.


BRADFORD WHITE®
WATER HEATERS
www.bradfordwhite.com

Mike Varley

Preferred Sales

724-699-2456



Expand your commercial business with large-dimension Uponor PEX piping and ProPEX® fittings.

Plenum-rated, full-flow, commercial-grade, PEX-a pipe for domestic water, radiant and hydronic piping.

uponor



uponorengineering.com/commercialpiping

MEET YOUR NEW “GO-TO” PRODUCT

APPLICATIONS: Potable, Food grade,
HVAC, Domestic Hot & Cold,
Greywater, Industrial,
Fire sprinkler, Irrigation,
Geothermal, Radiant Heating
& Cooling

- CORROSION FREE PP-R**
- 10-YEAR WARRANTY**
- LEAK-FREE HEAT FUSION JOINTS**
- 75% REDUCED LINEAR EXPANSION**
- 1/2" TO 4" SOCKET FUSION**
- 6" TO 24" BUTT FUSION**



614-876-2477
www.aquatherm.com

**BWA
SOUTH**


aquatherm

MASTROIANNI & ASSOCIATES, INC.

Manufacturers' Representative of Products for the Mechanical Trades Since 1984

HOT WATER PRIMETER HEATING, STEAM, ELECTRIC RADIATORS, TOWEL WARMERS

RUNTAL RADIATORS www.runtalnorthamerica.com

LINK SEALS, PIPE SLEEVES, GASKETS

LINK SEAL , GARLOCK , PSI, THUNDERLINE, GPT www.linkseal.com

BARCO BALL JOINTS, PACKED SLIP JOINTS, BELLOWS EXPANSION JOINTS, VENTURI FLOW METERS, SEISMIC 'V'-LOOPS

HYSpan PRECISION PRODUCTS www.hyspan.com

HEAT EXCHANGERS (SHELL & TUBE), REPLACEMENT TUBE BUNDLES, AIR/DIRT SEPARATORS AIR PURGERS, AUTOMATIC AIR VENTS, PUMPS, SUCTION DIFFUSERS, TRIPLE DUTY VALVES

THRUSH CO www.thrushco.com

DOMESTIC WATER BOOSTER SYSTEMS, SKID MOUNTED HVAC PACKAGES

TIGERFLOW SYSTEMS www.tigerflow.com

HYDRONIC BALANCING VALVES (AUTOMATIC & MANUAL), "COIL PAKS", METERING STATIONS

NEXUS VALVE www.nexusvalve.com

HUMIDIFIERS (STEAM, ELECTRIC, GAS)

PURE HUMIDIFIER www.purehumidifier.com

EXPANSION TANKS, BUFFER TANKS, AIR SEPARATORS, GLYCOL MAKE-UP SYSTEM

JOHN WOOD CO www.johnwood.com

CONDENSATE / BOILER FEED / VACUUM PUMP PACKAGES, END SUCTION & SPLIT CASE PUMPS SUMP PUMPS & OIL MINDING PUMP SYSTEM

FEDERAL PUMPS CO www.federalpumps.com

PLATE & FRAME HEAT EXCHANGERS

POLARIS www.polarisphe.com

PUMPS: END SUCTION, SPLIT CASE, VERTICAL IN-LINE, VERTICAL TURBINES

FEDERAL PUMPS CO www.federalpumps.com

CHECK VALVES, STRAINERS, BUTTERFLY VALVES, GROOVED PRODUCTS

MUELLER STEAM SPECIALTIES www.muellersteam.com

FLEX CONNECTORS, EXPANSION JOINTS, NESTED LOOPS, PIPE GUIDES

GENERAL RUBBER CO., ENGINEERED FLEXIBLE PRODUCTS... www.general-rubber.com
..... www.engineeredflex.com

VIBRATION ISOLATION

VIBRATION ELIMINATOR CO www.veco-ny.com

PRE-INSULATED PIPE SHIELDS

VALUE ENGINEERED PRODUCTS www.valueng.com

7601 First Place Drive ~ Ste A- 13 ~ Phone: 440.786.1100 ~ Fax: 440.786.1103

www.mastroiannihvac.com



Line Card – May 2015

107 Cypress Street S.W. Reynoldsburg, OH 43068
phone: 740.927.6880 or 888-927-4244 fax: 740.927.4545

www.RepSourceLLC.com

Manufacturers Representatives Serving Plumbing, Mechanical, Electrical, Architectural
and Water Treatment Industries. Representing the following product lines:

A Better Idea/Quick Block/EZ Sleeper www.pipeease.com	E-Z Sleeper / Quick Block – Rooftop pipe support blocks
ABT – Polydrain www.abtdrains.com	Pre-sloped polymer trench drains, Trench Former – pre-sloped trench drains systems.
Bradley Corporation www.bradleycorp.com	Advocate all in one hand washing stations, washfountains, Express and Frequency lavatory systems, Navigator thermostatic mixing valves, showers, safety equipment, metering faucets, security fixtures, patient care units, Terreon solid surface products, Evero natural quartz products.
Cool Drain Flow www.coolrainflow.com	Drain Line Tempering Kits for commercial kitchen equipment, boiler blow down drain lines, condensate return, heat exchanger and dehumidifier lines to temper drain water below 140 deg F.
Creative Industries www.creative-terrazzo.com	Pre-cast terrazzo shower floors, mop basins, concrete laundry tubs and stairs or benches, terrazzo or concrete or glass counter tops and custom terrazzo products.
Eemax www.eemaxinc.com	Electric Instantaneous water heaters, DI and booster heaters, emergency shower eyewash heaters.
Hydrotek www.hydrotekintl.com	Sensor operated Faucets, Flush Valves and Showers. Solar powered AC and DC operation. All products comply with the ARRA and BAA and are available in 2014 low lead requirements.
Just Manufacturing / EBC www.justmfg.com	Stainless steel commercial, institutional & residential sinks. EBC stops/supplies, cast p-traps, cast & tubular waste fittings.
Keltech www.Keltech-inc.com	Electric Instantaneous water heaters. (A subsidiary of Bradley Corporation)
Liberty Pumps www.libertypumps.com	Sump, drain and condensate, effluent, sewage, grinder, macerating toilet and engineered pump system packages.
Marlo www.marlo-inc.com	Commercial & industrial water softeners, media filters, reverse osmosis, dealkalizers and deionized water treatment equipment.
Oasis International www.oasiscoolers.com	Oasis International, headquartered in Columbus, Ohio, manufactures and distributes a wide range of water dispensing solutions under the Oasis and Sunroc brands.
Plumberex www.plumberex.com	Pro-Extreme , Trap Gear , Handy Shield Maxx and Clear Shield lavatory trap and riser insulation kits. Mushroom Flange and Floor Sink Carrier specialty products.
Raychem / Pentair Thermal Heat Tracing www.pentairthermal.com	HWAT-Plus self-regulating heating cable system for domestic hot water, XL-Trace freeze protection cable, Pyrotex MI and Electromelt snow and anti-icing cable, IceStop roof and gutter de-icing cable, RaySol floor warming and freezer frost heave cable, QuickNet floor heating cable.
Schott Scientific Glass / Kimax www.us.schott.com/drainline	Glass piping for acid waste and containment piping systems. Knight-Ware acid neutralizing sumps.
Summit Ice Melt Systems www.summiticemelt.com	Roof Ice Melt Systems. Radiant Edge HotSlot , Radiant Edge LT , Radiant Edge PRO , Radiant Edge LowSlope , Radiant Edge Valley , Heated Standing Seam Metal Roofing .
Tyler Pipe www.tylerpipe.com	American made CISPI, Cast Iron Pipe ,Fittings, and Couplings.
Wade Drainage www.wadedrains.com www.hydromax.com	Cast iron floor drains, floor sinks, roof drains, cleanouts, carriers, interceptors, hydrants, shock absorbers, trap primers, access covers,, trench drains, Hydromax Siphonic Roof Drainage System.
Water Control Corporation www.watercontrolinc.com	Rainwater Reclamation Systems with Ultraviolet or Ozone purification, vortex downspout separators, storage tanks and complete controls for turnkey systems.
Waterless Company www.waterless.com	Waterless “No Flush” vitreous china and fiberglass urinals with EcoTrap and Blue Seal liquid, UTC Sentinel sensor flushing systems. Everprime floor drain trap primer liquid. Greencleen chemicals.
Xerxes www.xerxes.com	Fiberglass oil, grease, solids interceptors, and decontamination tanks..
Additional Products Distributed: www.repsourcellc.com	Bathroom Partitions (solid plastic, baked enamel, stainless steel, laminate and phenolic), Bathroom Accessories, Lockers (solid plastic and metal), Water Treatment Products.

**Odorless.
Worryless.
Costs less.**



**LEED®
Applicable!**

WATERLESS™

No-Flush™ Urinals



RETROFIT / NEW CONSTRUCTION

- Lowest Long Term Cost
- Most Simple System
- Longest Installation History
- No Overflows
- Reduces Waste Volume
- Reduces Vandalism

PROFESSIONAL CONSERVATION™, SINCE 1991

RepSource, LLC

107 Cypress Street S.W., Reynoldsburg, OH 43068

740.927.6880 or 888.927.4244

www.waterless.com



**Finally -
A Simple Solution
to an Age Old
Plumbing Problem**

EVERPRIME®

Simply Add It ...and Forget It!

Works great in unused floor and shower drains, sinks and water fountains, toilets/urinals, condensate drains and other unprimed or unused drains.

Yep, it's that good!



Region 2 Affiliate Report

I'm guessing everyone taking the time to read this survived the Eclipse of 2017! Whew, some of you in Region 2 were very close to the "totality" zone. Congratulations.

It seems like I just wrote an article that said summer was starting. Now, we're closing in on the end. Where did the time go? I love the upcoming autumn colors but I'm not too fond of the winter months that follow.

The third week of August is always a special time in Ann Arbor, MI, especially at Washtenaw Community College. WCC hosts the United Association of Plumbers, Pipefitters, Welders, and Service Techs. Nearly 2,000 UA instructors and professionals from the US, Canada, Australia, and Ireland attend the Instructor Training Program.

I have worked closely with UA Instructors from Local 1 out of NYC over the past few years. They have three plumbing related courses they teach at WCC. Part of their class agenda each year includes a morning and afternoon visit and tour of our NSF laboratories. They love it when our lab technicians conduct plastic pipe burst and impact tests. The groups have grown so large that we now charter a bus. A total of 73 made it this year.



The UA morning group!



The UA afternoon group! Photos taken by NSF.

Some great things to look forward to in October is the ASPE Technical Symposium in Montreal, QC. Technical Sessions include Fundamentals, Fire & Life Safety, Materials & Equipment, The Business of Plumbing Engineering, and Designing Across Borders.

I hope you are planning to go. I know I am. I've sent away for my renewal passport. I should have it back by the time most of you browse your chapter newsletter.

For those of you looking for copies of the 2018 IPC, IMC, and IFGC books, I have them for sale. The small amount of money made on the sales help offset the travel, hotel and food costs by those attending the code hearings.

Sadly, I must inform you of the untimely passing of a young, talented, and gifted young lady who devoted her professional career to advancing Public Health, particularly focusing on water issues. On August 23rd, the plumbing world lost my Building Water Health colleague and friend, Allison Yee. At only 27 years of age, the work she accomplished in such a short time will be remembered and utilized by the entire plumbing engineering world for decades to follow. God grant her eternal peace and happiness.

Dann Holmes – ASPE Region 2 Affiliate Liaison
NSF International – Building Water Health
Business Development Manager
r2al@aspe.org or (734) 214-6222

Advance Thermal Corp.

Removable Insulation & Acoustic Covers

Aerco

Northern & Central Ohio

Commercial Condensing Boilers

Commercial Condensing Water Heaters

Bell & Gossett

Balance Valves

Automatic Flow Limiting

Manual Flow Limiting

Pressure Independent Control

Hydronic Specialties

Centrifugal Pumps

Base Mounted

Close Coupled

Double Suction

Horizontal Split Case

In-Line

Multi-Stage

Heat Exchangers

Shell & Tube

Plate Heat Exchangers

Replacement Tube Bundles

Heat Transfer Packages

Hydronic Specialties

Pressure Booster Systems

Submersible Pumps

Variable Speed Systems

Vertical Turbine Pumps

Expansion/Compression Tanks

Bobco

Differential Gauge Kits

Bock Water Heater

Gas Fired Water Heater

Electric Water Heater

Oil Water Heater

Indirect Water Heater

Solar / Geo Thermal Water Heater

Electric Point of Use Water Heater

Burnham Commercial

Scotch & Firetube Boilers

Low Nox Boilers

Deareators & Boiler Accessories

Cemline Corp.

ASME Tanks

Boiler Blowdown Separators

Condensate Coolers

Hot Water Storage Heaters

Packaged Water Heaters

Replacement Tube Bundles

Stone Steel Lined Tanks

Unfired Steam Generators

Danfoss

Greater Toledo Area

Variable Frequency Drives

Motor Soft Starters

Domestic Pump

Boiler Feed Systems

Condensate Return Pumps

Pressure Powered Pumps

Vacuum Pumps

Dow Heat Transfer Fluids

DOWTHERM™ SR-1 Ethylene Glycol

DOWFROST™ HD Propylene Glycol

Dri-Steam

Greater Toledo Area

Steam Injection Humidifiers

Gas To Steam Humidifiers

Steam To Steam Humidifiers

Electric Steam Humidifiers

Evaporative Humidifiers

Ultrasonic Fog Humidifiers

Fluid Design Solutions

Boiler Plant Packages

Custom Mech. Room Pumping Pkgs

Packaged Snowmelt Solutions

Solar Pump Packages

Goulds / G&L Commercial

End Suction Pumps

Vertical Multi-stage

Pressure Booster Systems

Vortex Waste Water

Griswold Controls

Automatic Balance Valves

Manual Balance Valves

Pressure Independent Control Valves

Coil Hook-up Kits

Griswold Water Systems

Chemical Free Water Treatment

Centrifugal Separators

Sand Filter Systems

Heatfab

Northern & Central Ohio

High Performance Chimneys & Vents

Hoffman Specialties

Steam Traps & Specialties

Condensate Return Pumps

Pressure Regulating Valves

Vacuum Pumps

Kadant Johnson

Pressure Powered Pumps

Laars Heating Systems

Residential / Commercial Boilers

Commercial Water Heaters

Commercial Pool Heaters

McDonnell & Miller

Boiler Safety Controls

Level Controls

Flow Switches

Metraflex Company

Flexible Pump Connectors

Expansion Joints & Guides

Non-slam Check Valves

Ball & Butterfly Valves

Miljoco

Pressure Gauges

Thermometers

Accessories

Niles Steel Tank

Glass Lined & Steel Storage Tanks

Peterson Equipment Co.

Pressure / Temperature Test Plugs

Rovanco

Pre-insulated Pipe

Containment Pipe

Solar Skies

Complete State of Ohio

Solar Panel Collectors

Tower Tech Cooling Towers

High Efficiency Cooling Towers

HVAC Cooling Towers

Process Cooling Towers

Power Generation Cooling Towers

Vertiflo

Pedestal Mount – Sump Pumps

Base Mounted Pumps

Vertical Pumps

Webster Engineering

Greater Toledo Area

Single & Dual Fuel Burners

Landfill Gas Burners

High Turndown Burners

Temp-A-Trim: Air Density Control System

Wessels Company

ASME & Glass Lined Storage Tanks

Glycol Fill Systems

Engineered Tanks

UNEQUALED QUALITY.

WOODFORD **ROOF HYDRANTS:** **RELIABLE** **ROOFTOP WATER.**

- Heavy-duty cast iron mounting system can be installed by roofer; hydrant can be installed later.
- RHY2-MS freezless hydrants automatically drain when shut off, even with hose attached.
- Easy to repair from top of unit without removing hydrant.
- Five-year limited warranty.

*RHY2-MS
Woodford roof
hydrant plumbs
directly to drain*

*Woodford SRH
sanitary hydrant:
no drain required!*



WOODFORD MODEL 67 **FREEZELESS WALL HYDRANT:** **BEST SELLERS.**



Woodford 67 series are the best-selling commercial wall hydrants in the nation. With good reason.

They drain automatically, even with a hose attached. They're high flow and maintenance-free. They have fewer parts to wear out than competitive hydrants. And they won't freeze.

They're guaranteed for five years. They set the standard other faucets can only hope to reach.

WOODFORD



WOODFORD
MANUFACTURING COMPANY

Excellence. *Always.*

800.621.6032 • www.woodfordmfg.com



Service • Support • Supply

Manufacturer's Representatives

7860 North Central Drive Lewis Center, OH 43035
740-549-1516 740-548-0985 (Fax)



Paired with Sloan High-Efficiency Flushometers, our Commercial Toilet and Urinal Systems take water efficiency to the next level.



All Sloan Flushometers are made from a high level of recycled material and are 100 percent recyclable.



Sloan Bio-Deck Sinks utilize natural materials such as corn cobs and other renewable domestic agricultural materials.



Dual-Flush Side Mount Retrofit is a fast, easy way to reduce water consumption.



Sloan Hands-Free Faucets promote cleanliness, hygiene and overall health benefits.



Monitoring Systems reduce operating costs and decrease water consumption.

Water Power

To arrange a personal consultation, call us at **800.982.5839**.

Every day around the world, Sloan advanced integrated water management systems provide elegant, efficient and hygienic washroom solutions for any commercial environment.

SLOAN®

Water Connects Us™



Call — 440-944-7500

Viega MegaPress® Stainless

Original innovation — new choices

viega.us/mpstainless



Advantages of MegaPress Stainless for IPS

- Approved for use with Schedule 10 and Schedule 40 pipe
- Viega Smart Connect® feature makes unpressed fittings easy to detect during pressure testing
- No risk of fire or smoke and no cool-down required, so fire watches or hot work permits are not needed
- ASME approvals: B31.1, B31.3, B31.9
- Fitting sizes ranging ½" to 2"

Viega. Connected in quality.

For more information, contact:

Carl Petitt, Jr.

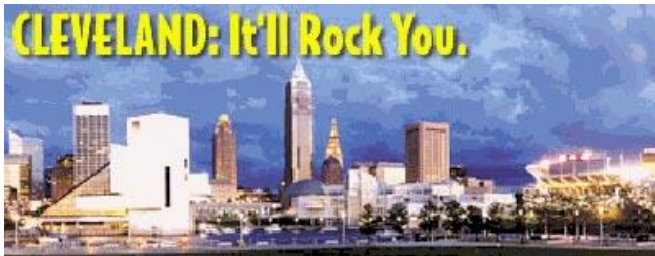
Technical Manager
Great Lakes
carl.petitt@viega.us
(614) 852-2691

Dan Meredith

District Sales Manager
dan.meredith@viega.us
(440) 241-4939

viega

RIDGID® is a registered trademark of RIDGID, Inc.



American Society of Plumbing Engineers
Cleveland Chapter
PO Box 5962
Cleveland, Ohio 44101-0962

** Local Chapters are not authorized to speak for the Society